

ARTIST EOI

Walker St Public Domain, Rhodes
City Art Trail & Rhodes Recreation
Centre (2025)

Issued 19 May 2025

Project overview

Walker Street Public Domain is a major streetscape upgrade scheduled to be implemented later this year by developer Billbergia as part of a voluntary planning agreement with Council. It impacts on the street boundary of a significant block of land enclosed by Walker Street, Gauthorpe St, Marquet St and Mary Street. Walker Street itself runs alongside the rail line and the western entrance to Rhodes rail station. This programme of works includes scope for artwork elements to be incorporated, and the appointed designers (URBIS) have highlighted key locations and streetscape elements where artwork could be incorporated.

Rhodes is the fastest growing suburb in the City of Canada Bay and its most diverse, with 70% of residents born overseas. Council has been committed to introducing artworks into capital projects to enhance sense of place and promote a distinct character and identity for our built environment. This has led the Rhodes Peninsula to become home to a diverse collection of significant, high calibre public artworks which variously honour first nation's stories and connection to country, acknowledge the industrial past, and weave in stories of contemporary life and communities.

Canada Bay Council is taking the opportunity to use the Walker St Public Domain integrated artworks to celebrate this public art collection and establish an art trail for Rhodes. Along with physical pieces such as feature informatic panels, wayfinding, pavement inserts and other surface treatments, a related site-specific artwork is also to feature in the new Rhodes Recreation Centre. The trail is to be accompanied by the development of online assets such as navigation and background information on specific artworks and points of interest that feature on the trail. This is intended to promote the artworks, raise their profile and tell their stories as well as promote active lifestyles with linkage to the wider Parramatta to Sydney Foreshore walking and cycling routes.

1. Rhodes Art Trail brief

The trail should be considered as a creative interpretation strategy and art trail that celebrates the extensive public art collection in the Rhodes peninsula. It is expected to be in an engaging and playful pictorial style to map the collection with distinctive motifs or icons for artworks and other cultural assets or points of interest. It is expected that this visual vocabulary can also extend into various collateral for local branding of events and activities with potential application and use under Council's Creative Hoardings Policy. The art trail brief covers 3 key elements outlined below and described in more detail in the supporting slide deck.

1.1. Walker Street Public Domain upgrade

Detailed designs for the public domain are currently being finalised between Billbergia, their designers URBIS and Council. As shown in the slide deck, URBIS have a selection of design elements that can be incorporated into the streetscape – all of which lend themselves to the art trail concept. A new crossing point on Walker Street to access Rhodes rail station offers an area of high footfall and visibility to this key transport hub which also includes bus bays and drop-off points. It is an ideal location and focal point for the feature informatic panels and a significant entry and exit point on the trail for visitors.

1.2. Rhodes Recreation Centre (RRC)

An art strategy and curatorial vision has been developed for this new facility which identifies opportunities for site-specific artwork in the building. This includes an artwall and two areas of carpet inserts on the ground floor which are to be used to extend the storytelling of the art trail into the RRC to make the RRC part of the story of Rhodes and its public art collection – literally putting it on the map. These artworks should continue the visual vocabulary and style of the trail in the Walker Street Public Domain through continuity of style, motifs and graphic devices and reinforce visual recognition.

As shown in the slide deck, there are 3 levels to the Rhodes Recreation Centre and it is proposed that the artwall include an exploded layout of the new centre to capture the dynamism and nature of the various activities in the building, help with orientation and visual communication. Intended to be flexible with non-permanent artwork, this commission would be the first on the artwall. There is scope to extend the RRC and design motifs into the carpet insert designs as a permanent art trail element.

1.3. Online assets

The increase in digital literacy and widespread use of QR codes allows a wide range of options to be considered. Currently, this supporting element has not been scoped out or fully explored. Council will begin with a review of its current online provision and consult key service areas such as Communications and Media. This element will be worked through with the appointed artist, but it should be assumed that all artwork elements of the commission should be future-proofed for a range of digital platforms.

2. Expression of Interest

This EOI is the first stage in a 3-stage process:

- **Stage 1** – artists submit an EOI by 9pm on **Tuesday 27 May 2025**. This should comprise of examples of relevant previous work and a short supporting statement.
- **Stage 2** – 3 artists will be invited to submit initial concept designs by **9pm on Monday 23 June 2025** (NAVA fee to be paid)
- **Stage 3** – 1 artist to be commissioned **early July**

Project delivery timelines are in various states of flux as follows;

- **Walker St physical artworks** – the construction programme has not been finalised but is expected to go on site over the next 3 months. Key integrated surface elements such as inserts to pavement or seating may need to be required for installation around September 2025. Other physical works such as panels and wayfinding will need to be specified for any necessary site preparation or groundworks, etc, with fabrication and installation to follow.
- **Rhodes Recreation Centre** – site specific artwork to be completed for public opening September/October 2025
- **Online assets** – whilst these are desirable elements they do not have the hard deadline requirements of the physical elements. However, all artwork components should be designed with online profiling in mind. These assets are expected to be developed and rolled out as delivery of the commissions allows.

2.1. Previous work

Artists should provide:

- Images of previous relevant and completed projects with any online links (maximum 4 pages)
- Current curriculum vitae or artist profile (1 page overview)

2.2. Supporting Statement

This only needs to be 1 page and should include the following:

- what the candidates believe they can bring to the project
- demonstrated experience on projects of a similar nature and scale
- capacity to deliver projects of this nature
- experienced in working with vector graphics
- ability to work with other stakeholders and collaborators as required such as fabricators for public art or development of online content
- confirmation of availability for the EOI and project timelines (point 2 above)
- comments on any limitations (point 2.3 below)
- acknowledged understand of Council's business ethics (point 3.1 below)
- acceptance of Council's position on copyright (point 3.2)
- how any First Nations content or references would be managed

In terms of selection criteria, Council will be looking to short-list a range of styles from artists which address the requirements of the Supporting Statement in the most compelling manner.

2.3. Limitations

Given the scope of the project – illustrative works, physical artworks and digital platforms, it is acknowledged that candidates may not be able to cover the full spectrum of fabrication or technical experience. Rather than deter any potential candidates, any such limitations should be identified in the submission with proposals as to how the candidate would look to address those limitations.

2.4. Short-listed artists

Council will provide a range of background information on Rhodes and specific information on 4 locations/artworks/landmarks. Artists will be required to submit at least 1 sketch design concept that presents icons/motifs for the 4 on a representational map of Rhodes. Artists should be mindful of the scope of the project and all design concepts should be suitable for the required range of applications.

Artists will receive a fee of \$1500 for their conceptual submission.

Artists are to present their designs to the project team online (date tbc). One concept will then be selected for full development and commissioning.

2.5. Engaged Artist

The engaged artist will be required to work with the Council Place & Events Team and liaise with any other Council service areas such as Project Management Office or Communications and Media, or other project contractors or stakeholders. A project plan with confirmed budgets, key priorities and deliverables will be agreed as the basis of the contract with the artist and fees will be in line with NAVA guidelines (City of Canada Bay Council is a member).

3. Additional information

3.1. Business ethics

All council suppliers are required to conduct their business with Council in accordance with Council policies and procedures. Artists are expected to have read and understood the copyright clause below, and the importance of conflict of interest and disclosure. Council's Statement of Business Ethics can be found [here](#)

3.2. Copyright

Copyright in material produced for concept designs resides with the artisan. Copyright in material produced for commissioned detailed designs in conjunction with Council resides with both Council and artisan.

Wherever Council reproduces images of the project in electronic, print, or digital media the Council undertakes to acknowledge the project artisan.

The project artist will not produce another work, which is identical or substantially similar in design without the prior consent of the Council. Information received in Expressions of Interest submissions is considered intellectual property, proprietary, commercial-in-confidence or otherwise confidential and will not be disclosed to external bodies.

3.3. First Nations content

Artists seeking to tell, address or include Aboriginal stories or references in their EOI, concept or commissioned designs, should seek permission from those with Cultural Authority and include details of any actions undertaken in the relevant submission to Council.

3.4. Enquiries

All enquiries should be directed to:

Kevin Wallace, Place Management Coordinator, City of Canada Bay Council

E: Kevin.Wallace@canadabay.nsw.gov.au

T: 9911 6422

Please email your submission to arts@canadabay.nsw.gov.au

Walker Street Public Domain, Rhodes City Art Trail & Rhodes Recreation Centre

Art project brief issued 19 May 2025

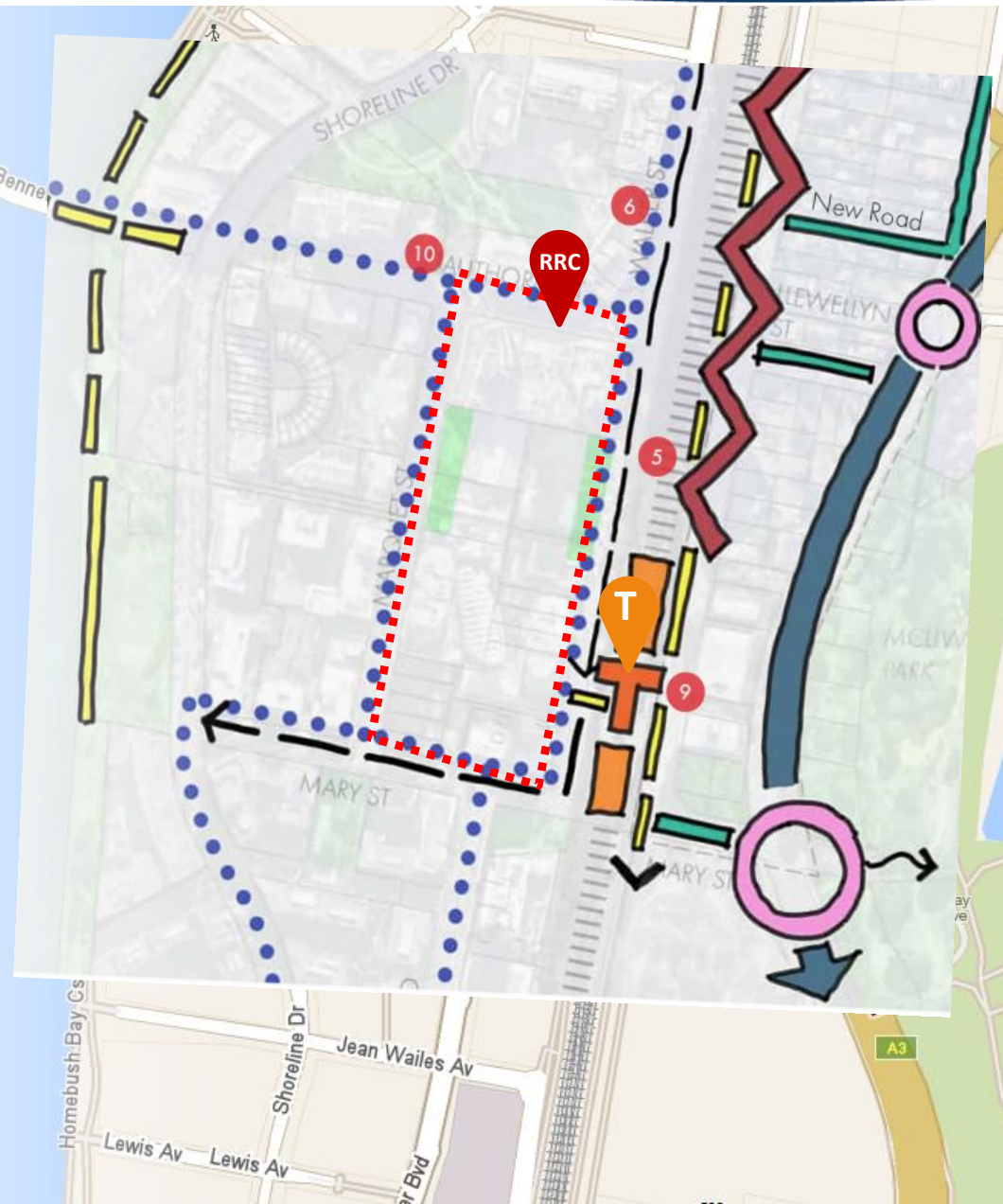
Walker Street Public Domain

Significant streetscape upgrade including the new Rhodes Recreation Centre (RRC) - potential site start date June 2025

Need spade-ready artwork to align with construction programme

Transport hub is key focus:

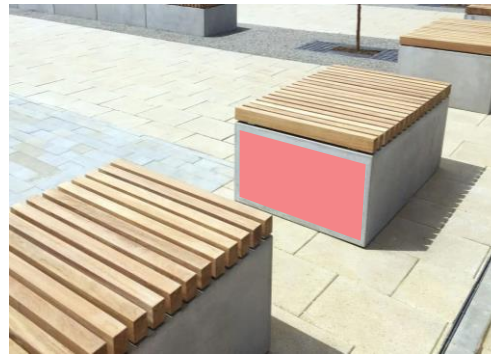
- New pedestrian crossing point to station entrance staircase
- Bus bays
- Car drop-off bays
- Shared use cycle path full length of Walker Street (at side of railway line)



Walker St Design Elements (URBIS)

Proposed placemaking art elements to enliven the streetscape:

- concrete seating, bins, bollards, etc
- vinyl art elements that are robust, replaceable and can vary in time
- removable acrylic artwork – recessed into surfaces or designed into the seat
- Pavement inserts
- sculpture for wayfinding, interpretive signage
- Free-standing art screen panels



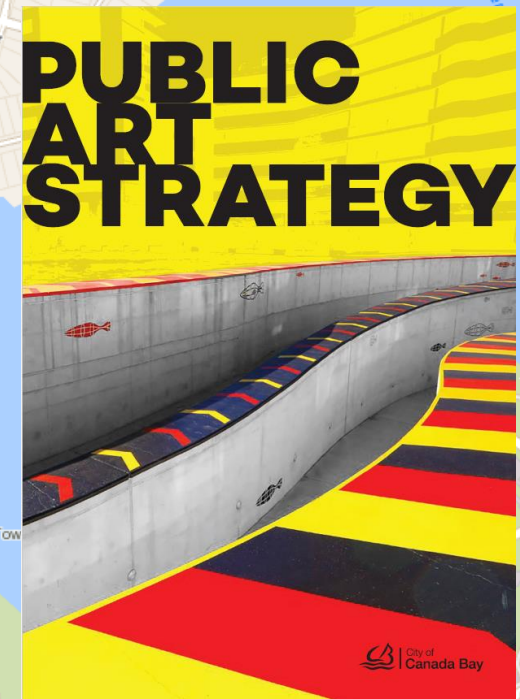
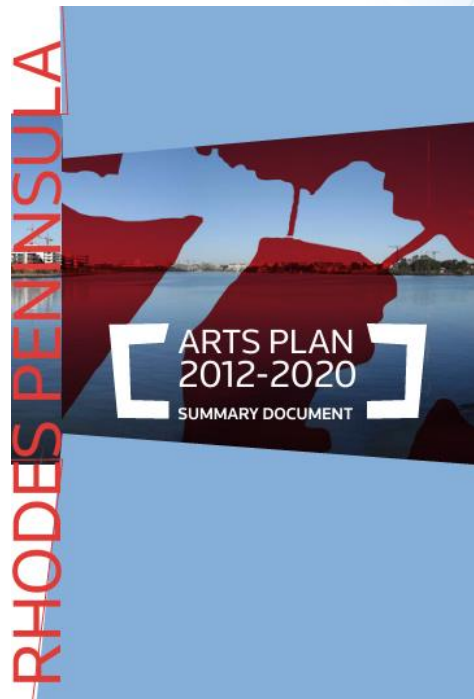
Proposal: Rhodes Art Trail

- Walker Street Public Domain artwork be used to develop an art trail in Rhodes
- Walker Street crossing point and transport hub has high footfall and visibility – ideal focal point for infomatic panels and wayfinding
- Creative interpretation strategy with pictorial style to map the collection with motifs or icons
- Supporting online assets to raise the profile of the collection and tell its stories
- Visual vocabulary can also extend into various collateral for local branding of events and activities as well as being used on hoardings
- Aligns with proposed design concepts by URBIS



Artist: Jenni Sparks

Rhodes City Art – the story so far...



Rhodes Art Collection

Currently a total of 27 individual artworks of which:

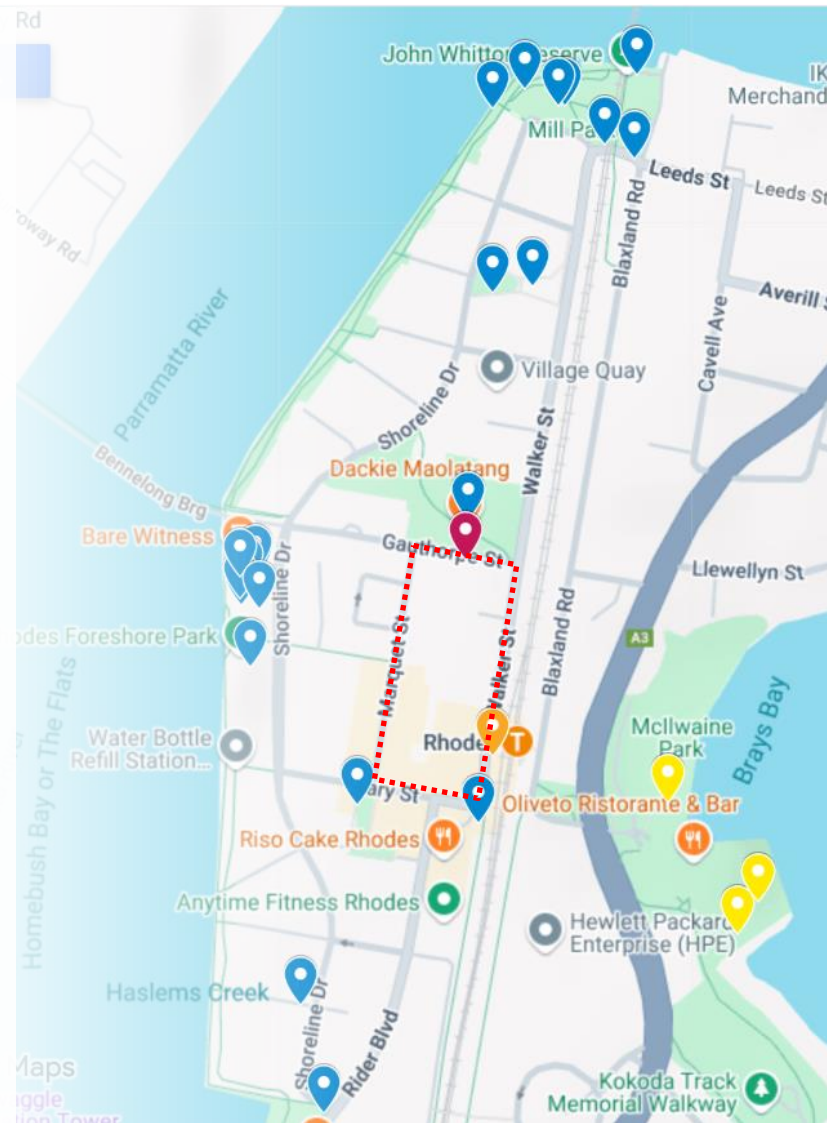
- 5 cartwheeling youngsters along foreshore walk
- 8 at The Connection

Including:

- 3 in Rhodes East/Brays Bay

Noting scope for:

- further art and heritage links into Concord West
- extension of trail to the Kokoda Track Memorial Walkway (Rhodes Park)
- future art opportunities in Rhodes East/Concord West as this area is redeveloped



Add layer + Share Preview

- John Whitton Reserve
- Mill Park stencils
- Point 3
- Cartwheeling Youngster
- Signal Box
- Papermoose
- The Ship Builders Memorial
- Slipway
- Picnic and Play tables
- Flight to the North and Back ...
- Wonderwall
- Berger Paints, Water Refill St...
- More than Just a Name
- Art bubbler?
- POPP table - Mulga the artist
- Mullet Feast and Wangal Wall
- Cumulus
- Digital Gallery
- City DNA/Rhodes
- Wired Space
- Starlit Rhodes
- In Motion - rug 1
- In Motion - rug 2
- In Motion - integrations 1
- In Motion - integrations 2
- Aqueous

Rhodes City Art and the RRC

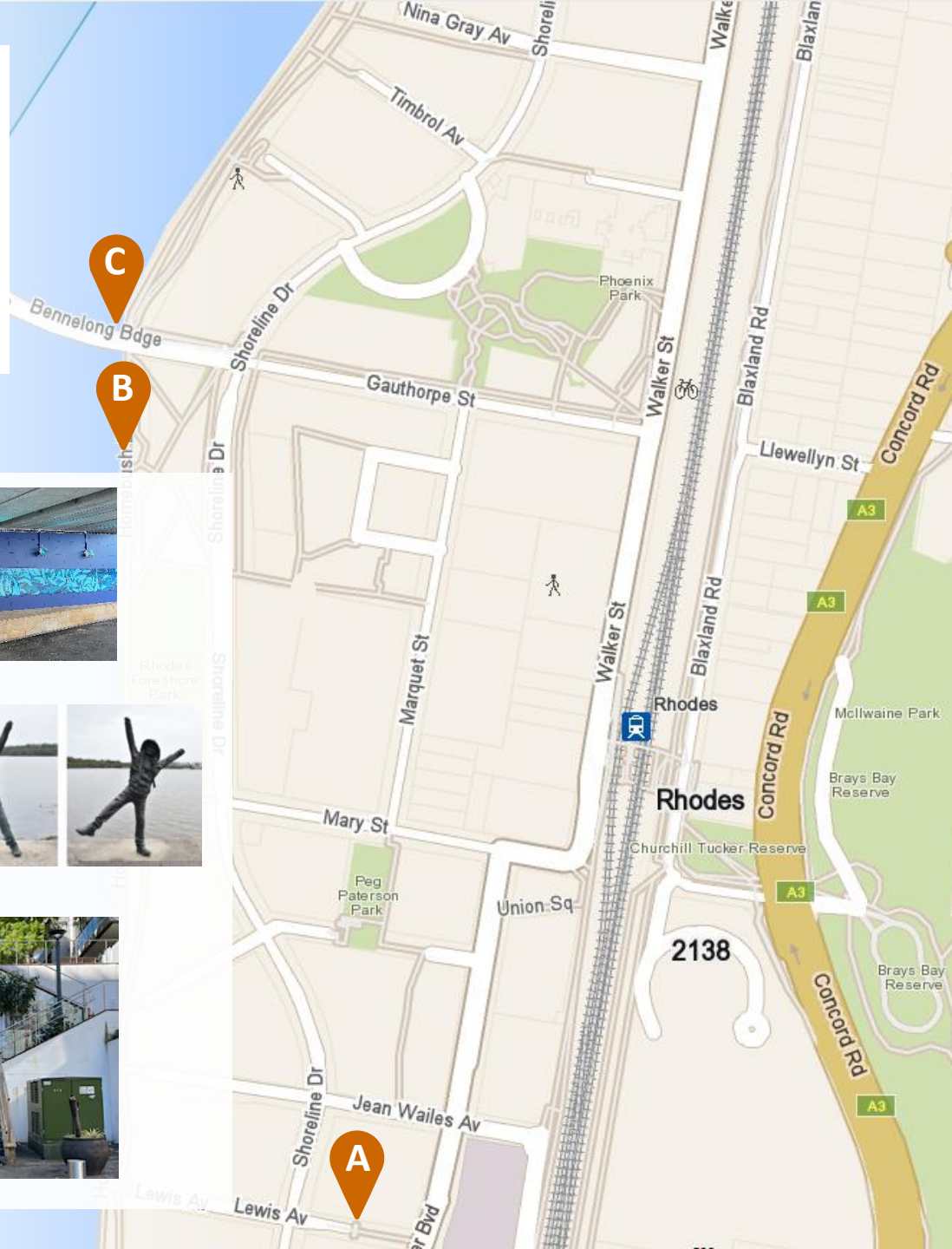
C: Bennelong Bridge
Mullet Festival (2024)
By MadWings



B: Homebush Bay Circuit
Cartwheeling Youngster
(2015) by Caroline Rothwell



A: Lewis Avenue
Wonderwall (2015)
by Olev Muska and Angela Pasqua



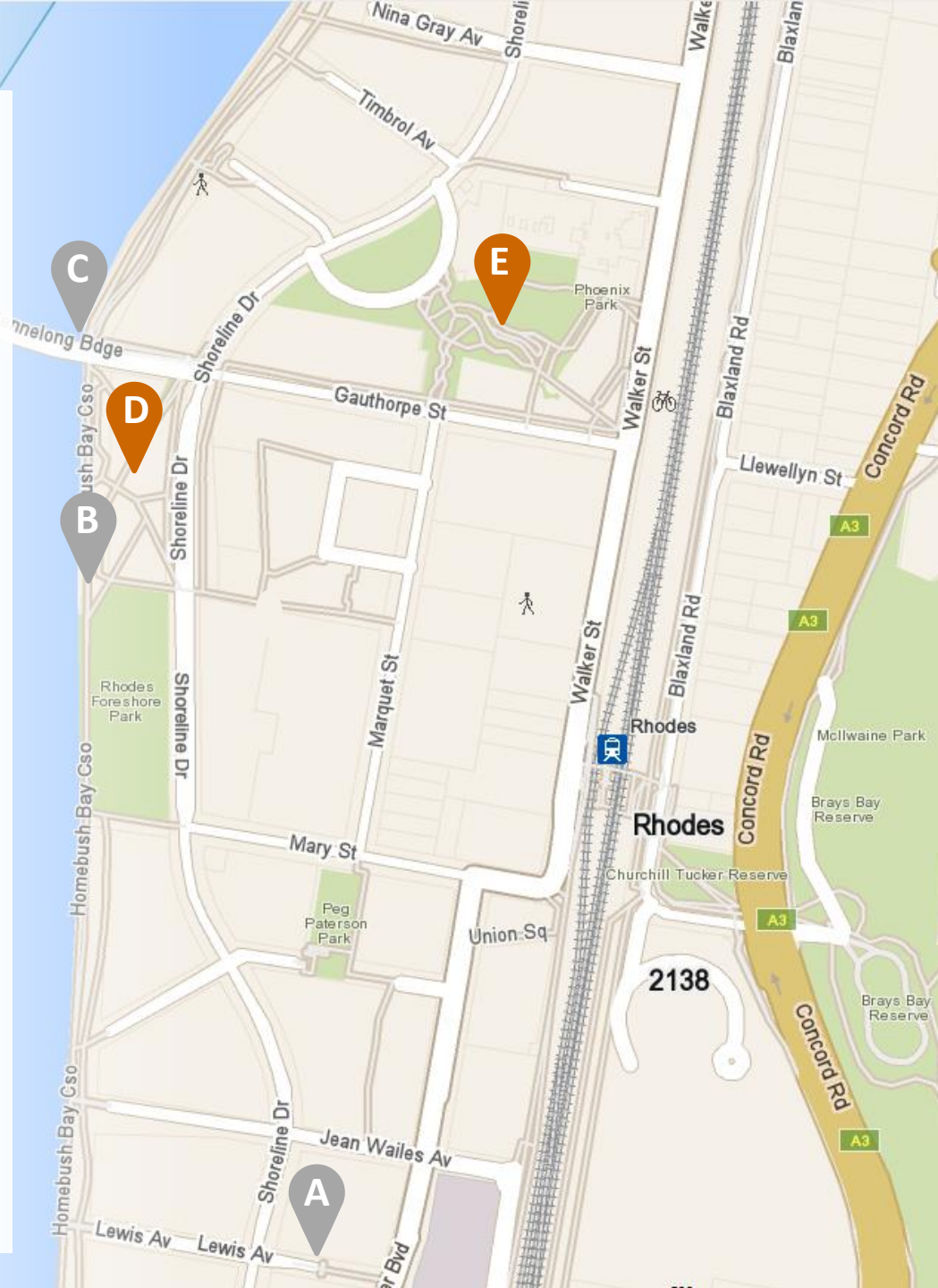
E: Phoenix Park
Wangal Wall (2015) by Jason Wing



D: The Connection, 30 Shoreline Drive
City DNA/Rhodes (2015) by Lu Xinjian



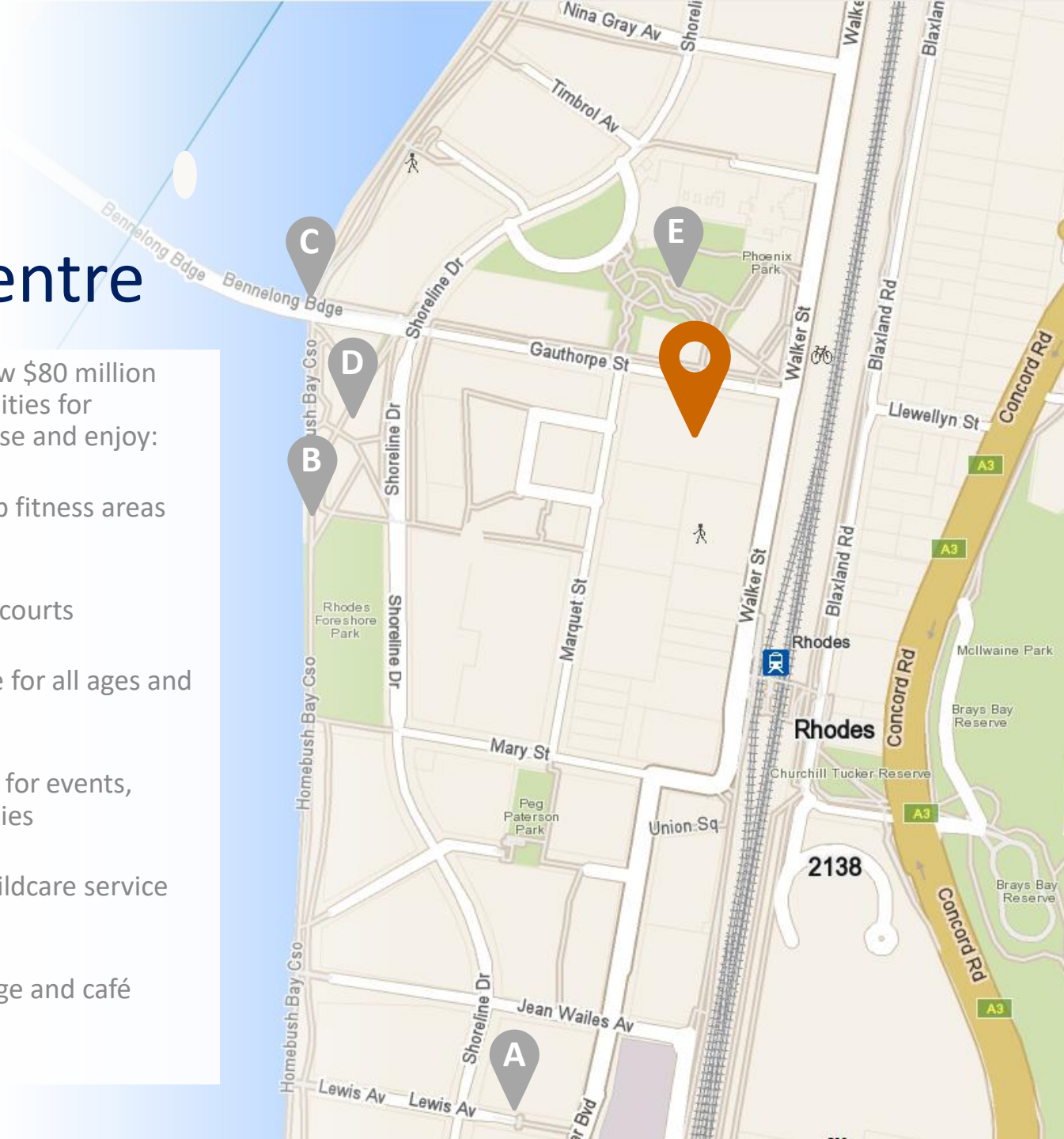
In Motion (2016)
by Brook Andrew



Rhodes Recreation Centre

Set to open in late 2025, this new \$80 million centre will offer world-class facilities for everyone in the community to use and enjoy:

- cutting-edge gym with group fitness areas and modern equipment
- two premium indoor sports courts
- dedicated gymnastics centre for all ages and skill levels
- bookable community rooms for events, workshops and group activities
- early learning centre and childcare service for young families
- welcoming community lounge and café
- allied health services

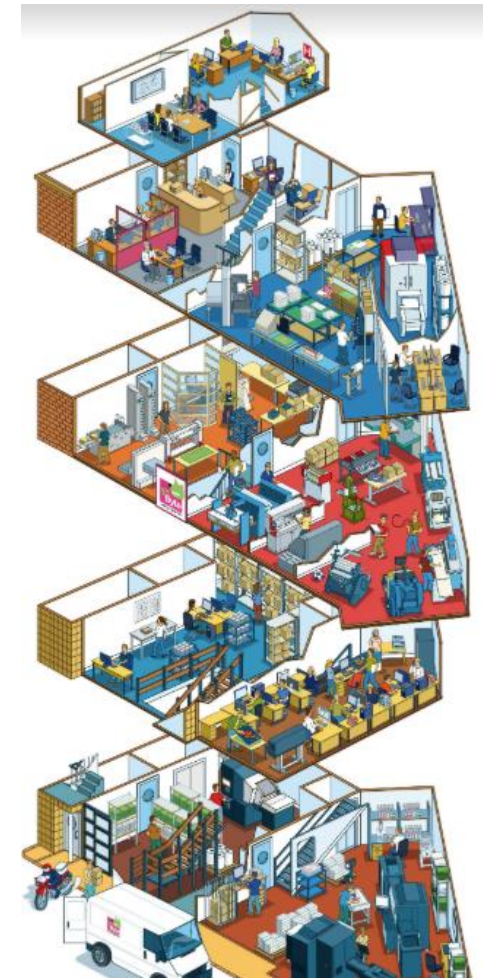


RRC: Ground floor art wall

- extend the trail into RRC to make it part of the story – literally putting it on the map
- aligns with initial concept of ‘internal street’
- continue the visual vocabulary and style of the trail – icons, motifs and graphic devices (potential use on bench + carpet)
- could have exploded view of centre with user areas as a map
- wall space 21m long x 3.5m high

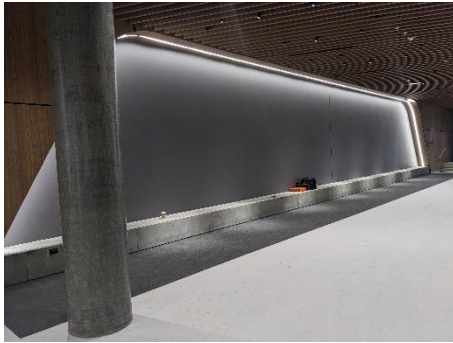


Artist: Beatrix Hatcher



Artist: Rod Hunt

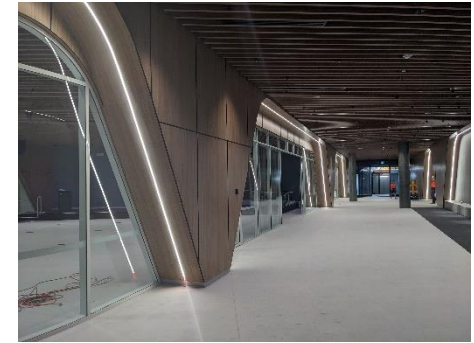
RRC: art wall, bench and carpet inserts



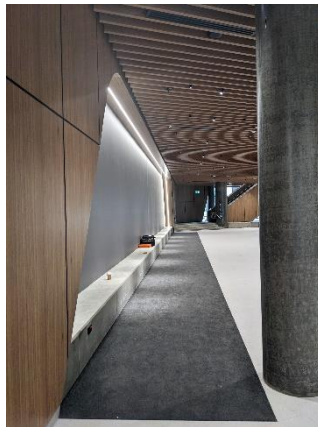
artwall, bench and
carpet insert 2



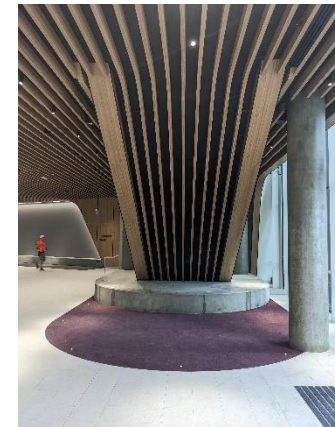
view of artwall from
Community Lounge



inner street –
artwall to right



wall/bench/carpet detail



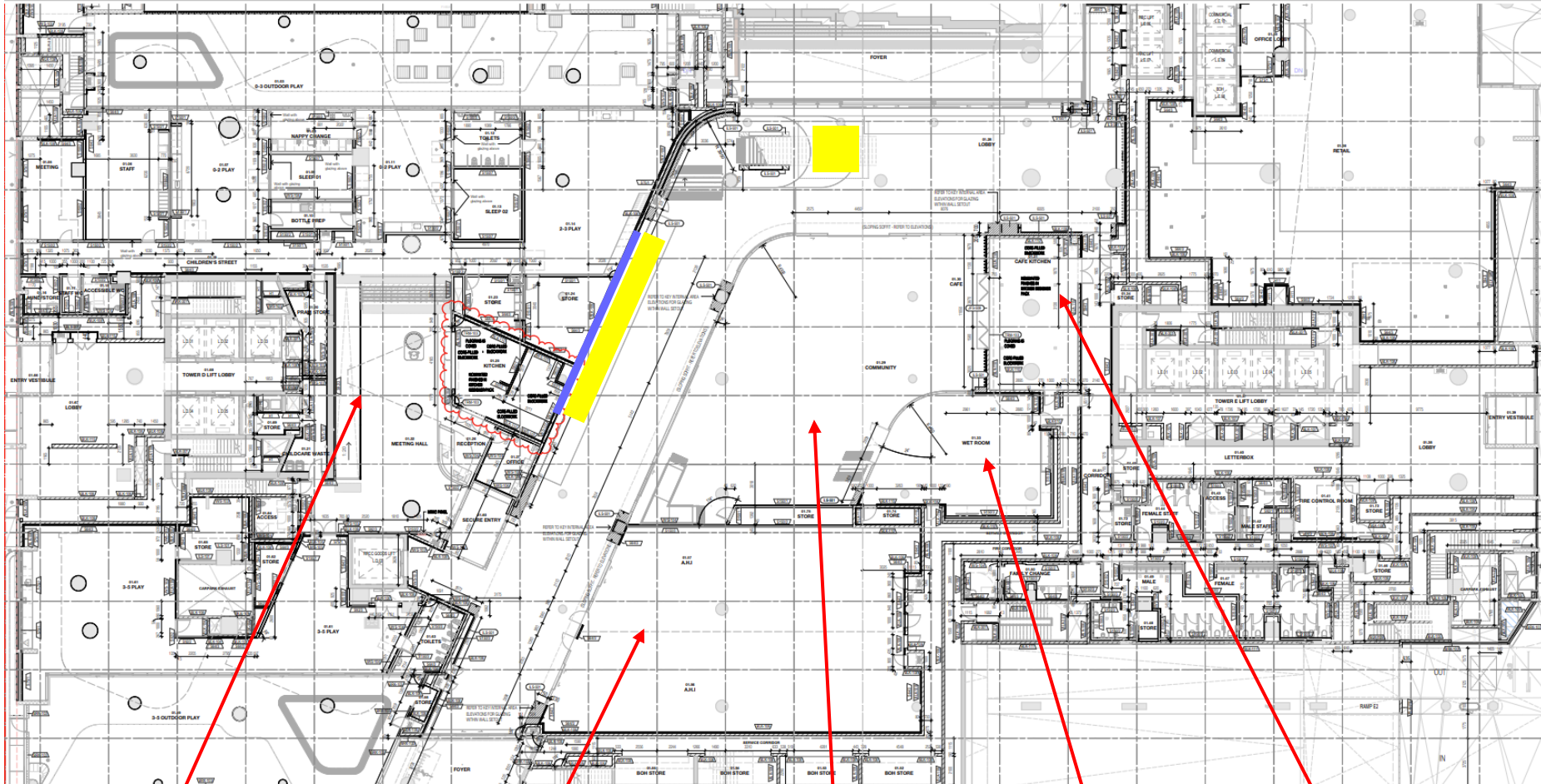
entrance - carpet insert 1

RRC: elevation and floor plans



Ground Floor

Entrance




Childcare Centre

Allied Health Spaces

Community Lounge

Canvas Room

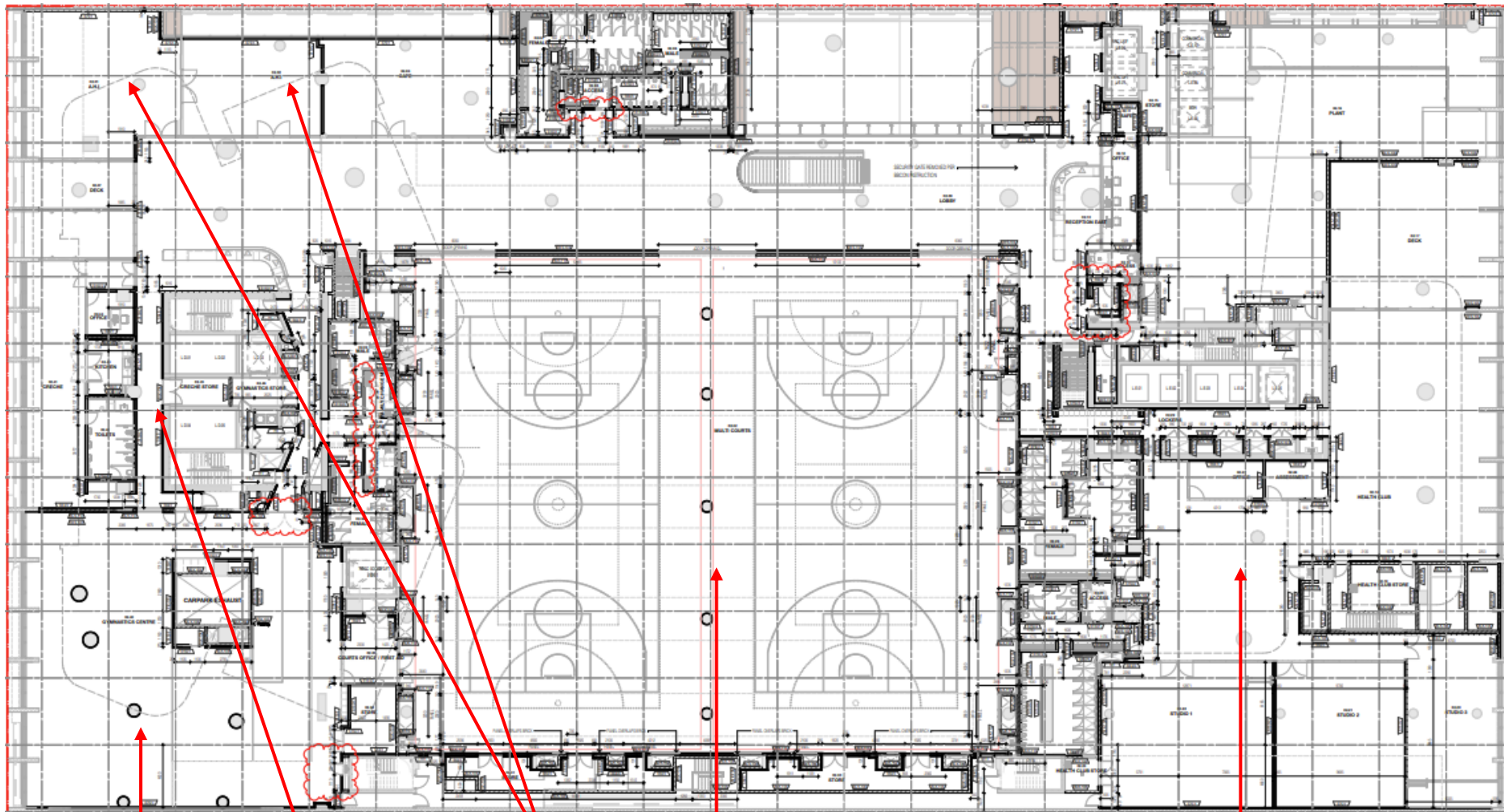
Cafe

 artwall

 Carpet inserts

Level 1

Entrance below



Gymnastic Centre

Creche

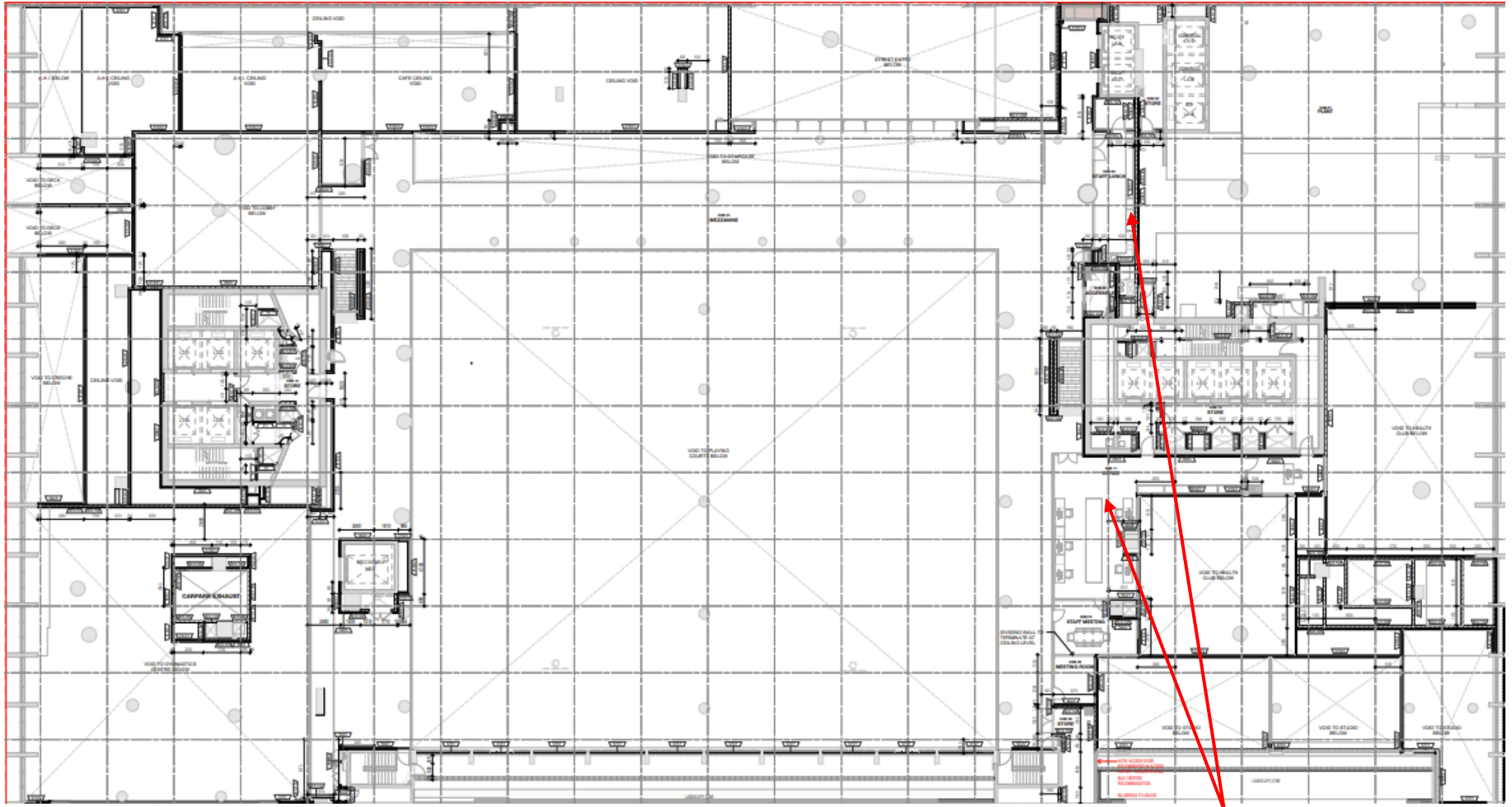
Allied Health

Indoor Courts

Health Club

Level 2 (viewing gallery to sports hall)

Entrance below



Staff Office / Amenities

For further information contact

Kevin Wallace, Place Management Coordinator

Kevin.Wallace@canadabay.nsw.gov.au

Tel: 02 9911 6422